

imagePROGRAF
GP-540 | GP-520

Canon

Delighting You Always

10 Colours
+
Fluorescent
Pink

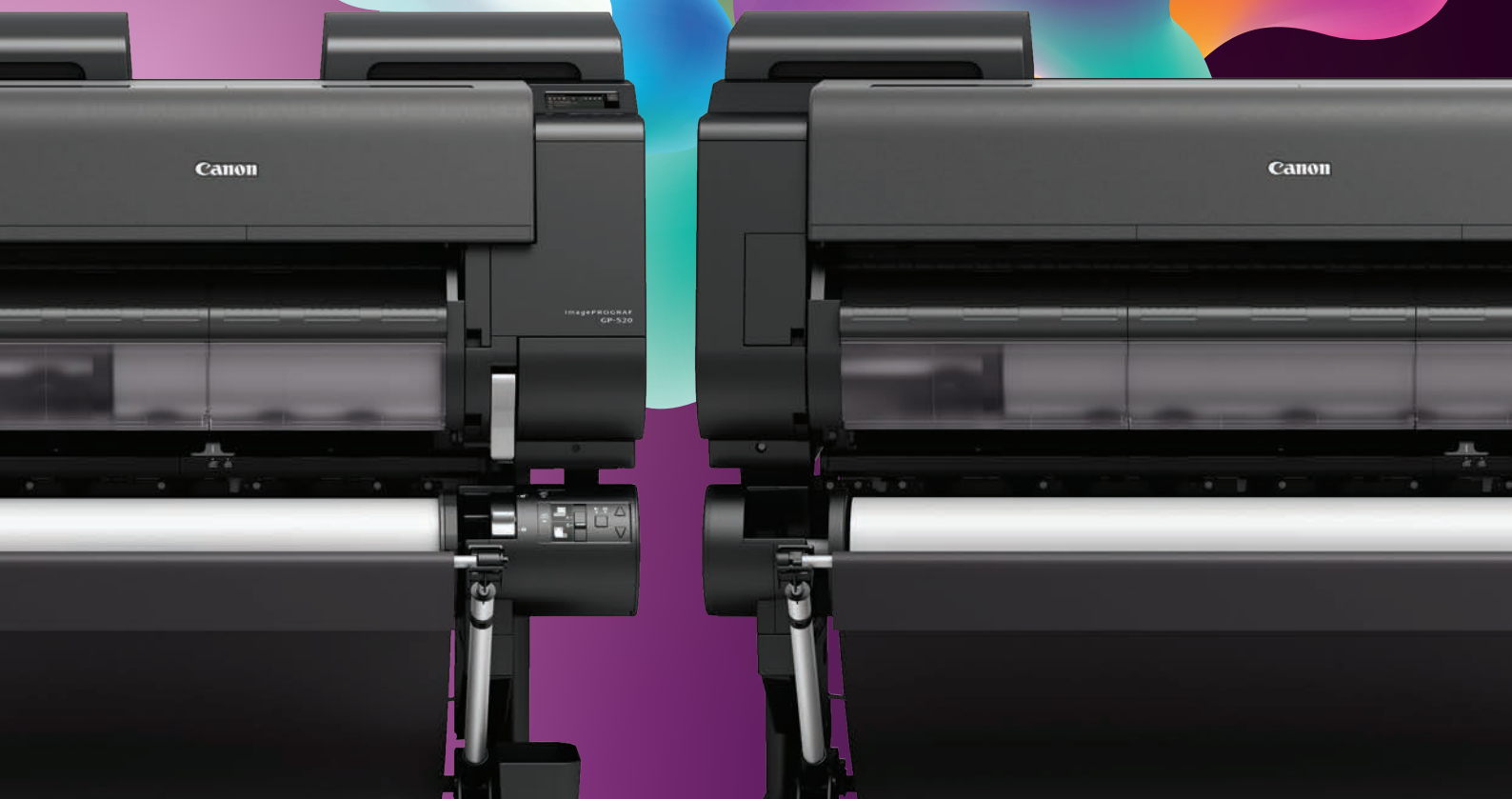
THE PERFECT POSTER PRINT THAT STANDS OUT

The new Canon imagePROGRAF GP-540 and GP-520 redefine high-quality poster printing by introducing world's first* aqueous pigment fluorescent ink, enabling wider colour gamut and striking fluorescent colour to be printed on every poster.

*Among major manufacturers of aqueous pigment large format printers excluding sublimation transfer system, as of September 30, 2021. Canon research.

GP-520

GP-540



Expanded Colour Capabilities



The five newly developed colours, red, orange, green, violet including the fluorescent pink, offer a wide colour gamut and high colour performance, producing vibrant and eye-catching hues from pastels to neon variations.

Excellent Print Quality



All imagePROGRAF printers employ L-COA PRO processing engine and FINE print head technology, delivering superior print quality and accuracy at high speeds. Non-firing nozzle detection automatically compensates for nozzle blockage, ensuring the best quality on every print.

Industry Standard Coverage



The new imagePROGRAF GP series has been awarded the world's first PANTONE™ 1-calibrated license for "PANTONE PASTELS & NEONS GUIDE Coated"², which includes fluorescent and pastel colours, in addition to 99% coverage of "PANTONE FORMULA GUIDE Solid Coated"³, which is used in a wide range of applications such as printing and design.

Consistent Colour Reproduction

The built-in multi-sensor scans the printed inks to compensate for variations due to differences between printers or changes over time. The amount of ink ejected is adjusted accordingly to the correct density to achieve consistent colour reproduction. This enables simple, fast and highly accurate adjustment of printed colours on a wide range of media at no additional cost, providing an economical, fast and simple workflow for users.

Average colour difference $\Delta E_{00} < 2.0$



with fluorescent ink

without fluorescent ink

Highly-Secured Print Environment

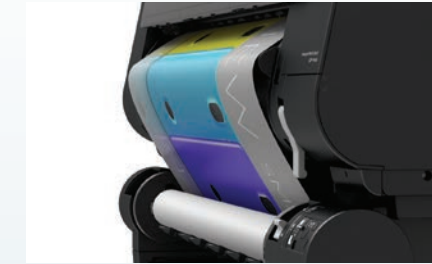
- Protect print job with a passcode through secure printing
- Self-encrypting hard disk drive
- Secure disk & file erasure for complete data security
- Data are transmitted securely through secured protocols
- Operation panel access can be restricted according to security requirements

Borderless Printing

Borderless printing is possible for all supported media in standard and custom sizes. With additional features such as three-sided edge-to-edge printing, the printers handle any poster printing task with ease.

Exceptional Levels of Productivity

The GP-540 & GP-520 can be equipped with an optional roll unit, allowing dual roll for continuous printing. In addition, the roll unit can also be configured as a bi-directional media take-up unit to rewind longer prints for further processing such as lamination.



Large capacity ink tanks can be used interchangeably, balancing between high volume continuous printing needs and managing running cost. Hot-swap ink tank allows ink tank replacement while printing, avoiding downtime during continuous printing and allows you to make full use of the ink in the ink tanks.



Industry Leading Media Handling Capability

Paper loading process could not be more convenient - all you have to do is load a roll of paper from the front, and the printer takes over all responsibility for loading the paper and detecting the media type, length and width. The remaining roll length is displayed on the operation panel and a warning is given when there is not enough media left for the print job.



Managing print jobs has never been easier with Canon software applications and solutions. They are specifically designed to keep every print on track and improve your workflow and productivity.

PosterArtist Lite with Advanced Features



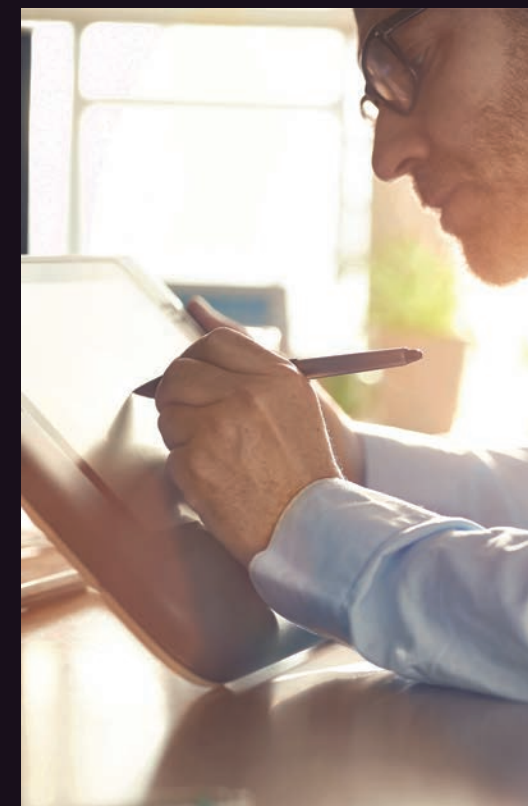
The latest version of PosterArtist Lite software is included, allowing businesses to create high impact posters with vivid colours easily. With advanced features and new templates, you can achieve vibrant prints with an expanded colour gamut or deploy fluorescent ink in specific areas, so that text, figures and clip art in pink and orange are truly outstanding.

Supports Workflow with Raster Image Processor (RIP)⁴ Software

The GP-540 and GP-520 are designed to accommodate your professional workflow with support of your familiar RIPs. RIPs from various developers are supported for print proofing, design, commercial photo printing and other applications.

Other Print & Management Solutions:

- Direct Print Plus
- Free Layout plus
- Canon PRINT Inkjet/SELPHY
- Media Configuration Tool
- Accounting Manager
- Device Management Console and more.



1 PANTONE™ is a trademark or registered trademark of Pantone LLC.
 2 PANTONE PASTELS & NEONS GUIDE Coated colour gamut coverage rate of GP-540/GP-520 is 97% when using Photo Paper Pro Platinum with imagePROGRAF printer driver at [Poster/Photo (Fluorescent)] [Highest] (600dpi).
 3 PANTONE FORMULA GUIDE Solid Coated colour gamut coverage rate of GP-540/GP-520 is 99% when using Photo Paper Pro Platinum with imagePROGRAF printer driver at [Poster/Photo (Fluorescent)] [Highest] (600dpi).
 4 Software that converts data in a page description language, such as PostScript, into a bitmap format that matches the resolution of the printer.

SPECIFICATIONS		GP-540	GP-520
Printer Type		10-Colour + Fluorescent Pink, 44" (1118 mm)	10-Colour + Fluorescent Pink, 24" (610 mm)
Number of Nozzles		18,432 nozzles (1,536 nozzles x 11 colours)	
Max. Print Resolution		2400 × 1200 dpi	
Nozzle Pitch		600 dpi x 2	
Line Accuracy ¹		± 0.1% or less	
Min. Ink Droplet Size		4 pl	
Ink Capacity	Sales Ink	160 ml / 330 ml / 700 ml (MBK, PBK, C, M, Y, GY, R, O, G, V, FP)	
	Bundled Starter Ink	330 ml (MBK, PBK, C, M, Y, GY, R, O, G, V, FP)	
Ink Type		Pigment Ink	
Printer Languages		SG Raster (Swift Graphic Raster), PDF (Ver. 1.7), JPEG (Ver. JFIF1.02)	
Print Solutions		Apple AirPrint, Direct Print Plus, Easy-PhotoPrint Editor, Canon PRINT Inkjet/SELPHY, Canon Print Service, Free Layout plus, PosterArtist Lite, Professional Print & Layout, imageRUNNER ADVANCE Direct Enlargement Copy	
Management Solutions		Media Configuration Tool, Accounting Manager, Device Management Console, Quick Utility Toolbox	
Interface (Built-in)	Standard	Hi-Speed USB, Full Speed (12 Mbit/sec), Hi-Speed (480 Mbit/sec), Bulk Transfer, Series B (4 pins), USB Memory (Direct Print for JPEG/PDF files)	
	Network	IEEE 802.3 10base-T, IEEE 802.3u 100base-TX/Auto-Negotiation, IEEE 802.3ab 1000base-T/Auto-Negotiation, IEEE 802.3x Full Duplex, SNMP (Canon-MIB), HTTP, TCP/IP (IPv4/IPv6)	
	Wireless LAN	IEEE802.11 b/g/n, WEP (64/128bit), WPA-PSK (TKIP/AES), WPA2-PSK (TKIP/AES)	
Standard Memory		3 GB	
Hard Disk		500 GB (Encrypted)	
PRINT SPEED²		A0 SIZE	A1 SIZE
Plain Paper (Poster/Photos, Fluorescent)		1 min 37 sec [Fast (Custom Q5)] 2 min 49 sec [Standard]	59 sec [Fast (Custom Q5)] 1 min 37 sec [Standard]
Heavyweight Coated Paper HG (Poster/Photos, Fluorescent)		2 min 49 sec [Standard] 5 min 33 sec [High]	1 min 37 sec [Standard] 3 min 09 sec [High]
Glossy Photo Paper HG 170 (Poster/Photos, Fluorescent)		5 min 33 sec [Standard] 8 min 16 sec [High]	3 min 08 sec [Standard] 4 min 40 sec [High]
MEDIA HANDLING			
Media Width	Roll Paper / Cut Sheet	152.4 ~ 1118 mm	152.4 ~ 610 mm
Media Thickness	Roll Paper / Cut Sheet		0.07 ~ 0.8 mm
Min. Printable Length	Roll Paper		101.6 mm ³
	Cut Sheet		203.2 mm
Max. Printable Length	Roll Paper		18 m ⁴
	Cut Sheet		2133.6mm
Max. Roll Outer Diameter		170 mm or less	
Media Feed and Output Method	Roll Paper / Cut Sheet	Front Load / Front Output ⁵	
Borderless Printing	Printable Media Width	152.4 ~ 1118 mm	152.4 ~ 610 mm
Margins	Recommended Area	Roll Paper - Top: 20 mm, Bottom: 3 mm, Side: 3 mm Cut Sheet - Top: 20 mm, Bottom: 31 mm, Side: 3 mm (Apple AirPrint) Cut Sheet - Top: 20 mm, Bottom: 20 mm, Side: 3 mm (Others)	
	Printable Area	Roll Paper - Top: 3 mm, Bottom: 3 mm, Side: 3 mm Roll Paper - Top: 0 mm, Bottom: 0 mm, Side: 0 mm (Borderless Print) Cut Sheet - Top: 3 mm, Bottom: 12.7 mm, Side: 3 mm (Apple AirPrint) Cut Sheet - Top: 3 mm, Bottom: 20 mm, Side: 3 mm (Others)	
DIMENSIONS & WEIGHT⁶			
Packaged Dimensions (W x D x H) Weight	Main Unit + Pallet	-	1324 x 902 x 1042 mm 125 kg
	Stand + Basket	-	111 x 797 x 223 mm 23 kg
	Main Unit + Stand + Basket + Pallet	1820 x 915 x 1042 mm 178 kg	-
	Roll Unit	1727 x 562 x 461 mm 33 kg	1244 x 562 x 461 mm 26 kg
Dimensions (W x D x H) Weight	Main Unit + Stand + Basket	1593 x 984 x 1168 mm (Basket Open)	1110 x 984 x 1168 mm (Basket Open)
		1593 x 766 x 1168 mm (Basket Closed)	1110 x 766 x 1168 mm (Basket Closed)
	Main Unit + Stand + Basket + Roll Unit	1593 x 984 x 1168 mm (Basket Open)	1110 x 984 x 1168 mm (Basket Open)
		1593 x 766 x 1168 mm (Basket Closed)	1110 x 766 x 1168 mm (Basket Closed)
POWER AND OPERATING REQUIREMENTS			
Power Supply		AC 100 ~ 240 V, 50 - 60 Hz	
Power Consumption	Operation ⁷	99 W or less	84 W or less
	Sleep Mode ⁷	2 W or less	2 W or less
	Power OFF	0.3 W or less	0.3 W or less
Recommended Environment	Temperature	15 ~ 30°C	
	Humidity	10 ~ 80% RH (no dew condensation)	
Acoustic Sound	Acoustic Power ⁸	Operation: Approx. 66 dB	Operation: Approx. 65 dB
	Acoustic Pressure ⁸	Operation: Approx. 49 dB (A) Standby: 35 dB (A) or less	Operation: Approx. 48 dB (A) Standby: 35 dB (A) or less
ACCESSORIES			
Printer Stand + Basket		Included	SD-21 (Optional)
Roll Unit (Optional)		RU-43	RU-23
2" / 3" Roll Holder (Optional)		RH2-46	RH2-29
CONSUMABLES			
Ink Tank		PFI-810 (160 ml) / PFI-830 (330 ml) / PFI-870 (700 ml)	
Print Head		PF-10	
Cutter		CT-07	
Maintenance Cartridge		MC-30	

Design and specifications are subject to change without notice.

¹ User adjustments are required. Printing environment and media must match those used for the adjustments. Paper required: Plain paper, CAD tracing paper, coated paper, CAD translucent matte film only.

² Time taken to print one page does not include time required for data processing, data transfer and pre-printing operations.

³ Minimum printable length for Cloth and Canvas media is 200mm.

⁴ Varies according to the operating system and application.

⁵ For cut sheet, manual feed using media locking lever.

⁶ Include roll holder set, exclude ink and print head.

⁷ Using wired LAN.

⁸ Measured using ISO 7779 standard by using 36" Standard Plain Paper 2, standard mode and line drawing / text mode.

Canon
Delighting You Always

CANON SINGAPORE PTE. LTD.
1 Fusionopolis Place, #14-10, Galaxis, Singapore 138522
Tel: 65-6799 8888 | Fax: 65-6799 8882 | <https://asia.canon>

CANON BUSINESS PARTNER / DEALER'S STAMP

This document is for information purpose only. The contents are subject to change without notice. Product options, name and availability may vary by regions. We expressly disclaim any liability or contractual obligations with respect to this document. Brands and product names are trademarks and/or registered trademarks of their respective owners.

Warning: Unauthorised recording of copyrighted materials may infringe on the rights of copyright owners and be contrary to copyright laws.

© Canon Singapore Pte.Ltd 2021. All rights reserved.